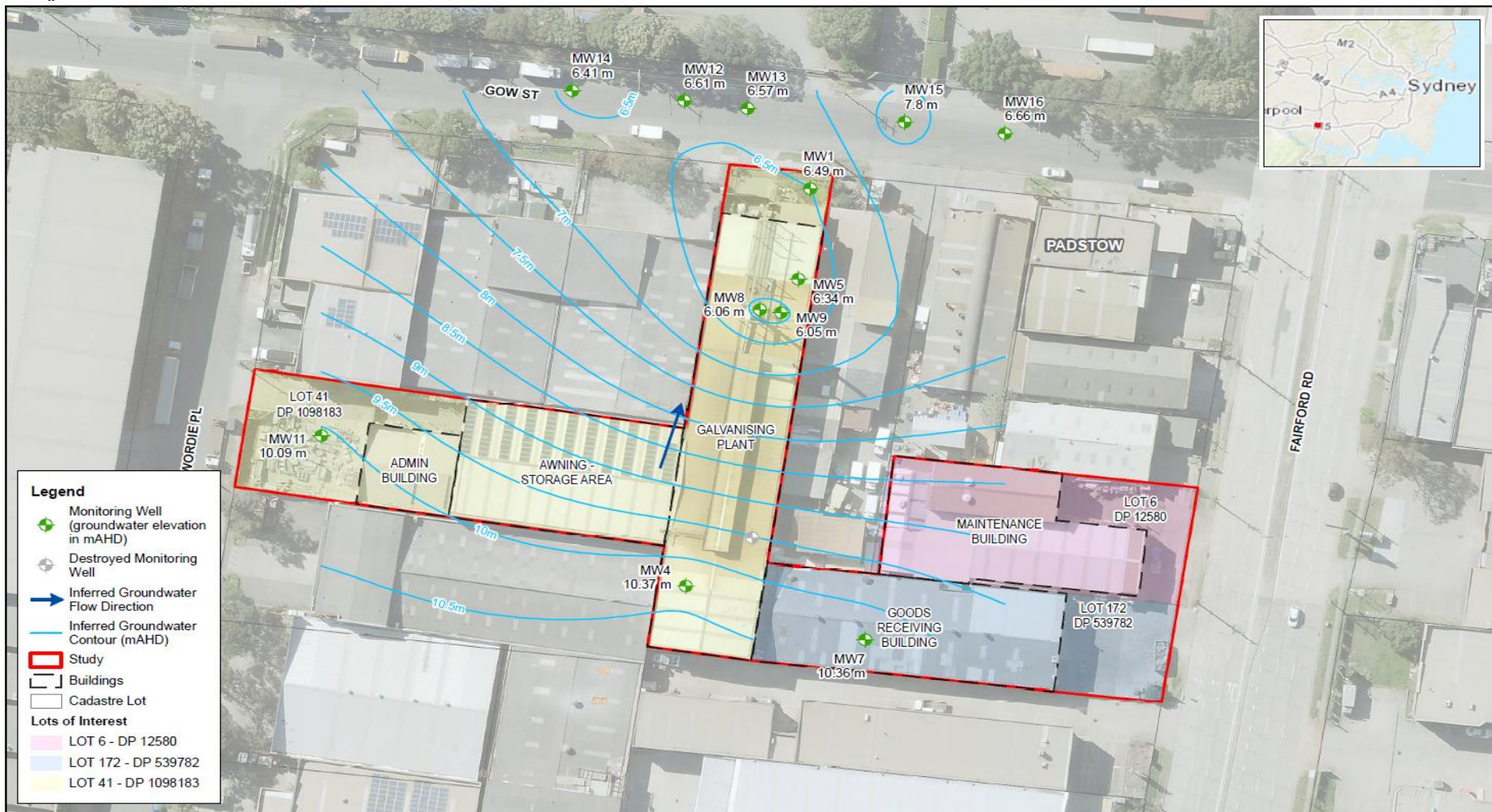
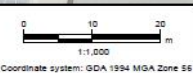


Licensee: Galvatech Pty Ltd  
 Address: 1 Wordie Place, Padstow  
 Environment Protection Licence: 7029 (Click to view)  
 Groundwater Monitoring Frequency: Annual

Monitoring Locations & Groundwater Contours



Map: PS126189\_F003\_GWCcontour\_2v2 Author: LR  
 Date: 29/10/2021 Approved by:



Groundwater Monitoring September 2021  
 Galvatech Galvanising Plant, 1 Wordie Place, Padstow, NSW  
 Figure 3  
 Groundwater Contour Plan

© WSP Australia Pty Ltd ("WSP"). Copyright in the drawings, information and data recorded ("the information") is the property of WSP. This document and the information are solely for the use of the authorized recipient and this document may not be used, copied or reproduced in whole or part for any purpose other than that which it was supplied by WSP. WSP makes no representation, undertaking or warranty, and accepts no responsibility to any third party who may use or rely upon the information. NSW Certified Quality System to ISO 9001. © APPROVED FOR AND ON BEHALF OF WSP Australia Pty Ltd.

Licensee: Galvatech Pty Ltd  
 Address: 1 Wordie Place, Padstow  
 Environment Protection Licence: 7029 (Click to view)  
 Groundwater Monitoring Frequency: Annual

Sampling Date	2017				2018				2019				2020				2021			
	24/09/2017				23/09/2018				22/09/2019				27/09/2020				19/09/2021			
Obtained Date	20/10/2017				29/10/2018				28/10/2019				18/11/2020				2/11/2021			
Published Date	25/10/2017				13/11/2018				7/11/2019				25/11/2020				16/11/2021			
Well	pH	Pb (mg/L)	Zn (mg/L)	NH <sub>3</sub> (mg/L)	pH	Pb (mg/L)	Zn (mg/L)	NH <sub>3</sub> (mg/L)	pH	Pb (mg/L)	Zn (mg/L)	NH <sub>3</sub> (mg/L)	pH	Pb (mg/L)	Zn (mg/L)	NH <sub>3</sub> (mg/L)	pH	Pb (mg/L)	Zn (mg/L)	NH <sub>3</sub> (mg/L)
MW1	7.1	nd	1.5	5.2	3.4	nd	2.4	0.096	6.4	nd	1.6	0.063	5.2	<0.001	1.4	0.022	5.2	<0.001	0.7	0.045
MW4	5.9	0.01	23	2.6	6.7	0.002	41	31	7.0	0.002	1.7	17	7.1	0.004	57	34	7.0	0.008	86	19
MW5	2.6	0.9	1200	27	2.6	0.78	1100	30	3.3	0.6	840	19	6.3	0.006	17	0.078	5.7	<0.001	49	0.006
MW7	4.6	0.01	1.6	0.1	4.7	0.005	4.1	0.098	5.0	nd	1	0.023	5.9	0.001	2.2	0.1	4.7	0.002	0.92	0.061
MW8	3.9	0.093	350	12	5.2	0.039	360	20	4.9	0.092	600	44	2.6	0.14	1800	180	4.1	0.1	360	31
MW9	5.6	1.4	2700	330	4.0	0.83	2400	360	2.9	0.001	51	230	3.4	0.48	490	47	2.8	0.31	1600	250
MW11	4.6	0.007	1.2	0.44	4.4	0.005	1.4	0.49	4.1	nd	0.001	0.3	4.5	0.005	1.3	0.54	4.2	0.005	0.14	0.34
MW12	5.1	0.002	41	1.9	5.5	0.001	38	5.7	5.9	nd	1.4	0.16	5.0	0.002	13	0.64	5.5	0.003	6.1	0.35
MW13	4.1	0.005	32	1.4	5.5	0.001	24	1.9	5.6	0.001	51	2.4	4.6	0.002	4.8	0.31	5.2	<0.001	5.8	0.47
MW14	5.8	nd	1.3	0.22	5.9	nd	1.3	0.18	5.5	0.003	34	1.5	5.8	<0.001	0.89	0.12	5.7	0.002	1.4	0.19
MW15	4.2	0.003	1.5	0.23	4.9	nd	0.29	0.099	5.5	0.003	0.19	0.097	4.8	0.003	0.21	0.053	4.8	<0.001	0.42	0.077
MW16	4.9	0.001	0.3	0.12	5.7	nd	0.49	0.098	5.2	0.001	0.16	0.14	5.6	0.002	0.21	0.13	5.3	<0.001	0.26	0.2
PW1	5.9	0.002	55	4.3	6.3	nd	29	2.7	5.8	nd	73	10	5.3	0.002	46	4.4	6.0	<0.001	34	4.8
PW2	3.8	0.024	220	35	5.5	0.004	64	8.8	3.6	0.049	320	47	3.6	0.012	320	63	5.5	<0.001	120	20
PW3	5.1	0.057	630	100	-	0.017	160	28	5.2	0.008	240	31	3.4	0.022	360	100	5.8	0.005	260	57
PW4	4.7	0.008	580	96	4.4	0.004	19	2.6	4.8	0.003	150	10	4.8	0.003	220	67	5.4	<0.001	130	50
PW5	Insufficient volume to sample				3.3	0.18	52	12	5.8	nd	30	3	2.8	0.2	520	140	2.9	0.17	460	88
AAC*	-	0.01 <sup>A</sup>	0.072 <sup>B</sup>	2.57 <sup>C</sup>	-	0.01 <sup>A</sup>	0.072 <sup>B</sup>	2.57 <sup>C</sup>	-	0.01 <sup>A</sup>	0.072 <sup>B</sup>	2.57 <sup>C</sup>	-	0.01 <sup>A</sup>	0.072 <sup>B</sup>	2.57 <sup>C</sup>	-	0.01 <sup>A</sup>	0.072 <sup>B</sup>	2.57 <sup>C</sup>

Notes

- \* - Adopted Assessment Criteria
- A - NHMRC/ARMCANZ (1996) Australian Drinking Water Guidelines
- B - ANZECC/ARMCANZ (2000) Australian and New Zealand Guidelines for Fresh and Marine Water Quality - Trigger value for freshwater, 95% level of protection
- C - ANZECC/ARMCANZ (2000) Australian and New Zealand Guidelines for Fresh and Marine Water Quality - Trigger value for freshwater, 95% level of protection, assumed pH of 6.0
- nd - Not detected above laboratory Practicval Quantification Limits